



**COLSTON CONSTRUCTION, INC.**  
BUILDER OF QUALITY HOMES  
804 Vista Via Avenue  
Taft, Ca. 93268  
BOB COLSTON (661)763-3517

# The Kingston

- One Story
- 3 Bedroom
- 2 Bath
- Stainless Steel Fixtures and Appliances Throughout
- Optional Bonus Room
- Optional 3-Car Garage with Bonus Room
- Optional Extended 2-Car Bay
- Optional Dual Sinks in Hall Bath 2
- Optional Bath 2 Cabinet
- Optional Fireplace
- Optional Kitchen Island



**Floor Plan - 2087**

The builder reserves the right to make modifications to all plans and specifications without notice. All plans and illustrations are artist's conception. Square footages quoted are approximate. Colston Construction expressly reserves its common law copyright in these plans.



**COLSTON CONSTRUCTION, INC.**

**BUILDER OF QUALITY HOMES**

804 Vista Via Avenue

Taft, Ca. 93268

BOB COLSTON (661)763-3517

# The Kingston



**2087 "A" OLD WORLD**



**2087 "B" RANCH**



**2087 "C" TUSCAN**

The builder reserves the right to make modifications to all plans and specifications without notice. All plans and illustrations are artist's conception. Square footages quoted are approximate. Colston Construction expressly reserves its common law copyright in these plans.



**COLSTON CONSTRUCTION, INC.**  
BUILDER OF QUALITY HOMES  
804 Vista Via Avenue  
Taft, Ca. 93268  
BOB COLSTON (661)763-3517

# The Kingston with Bonus Room



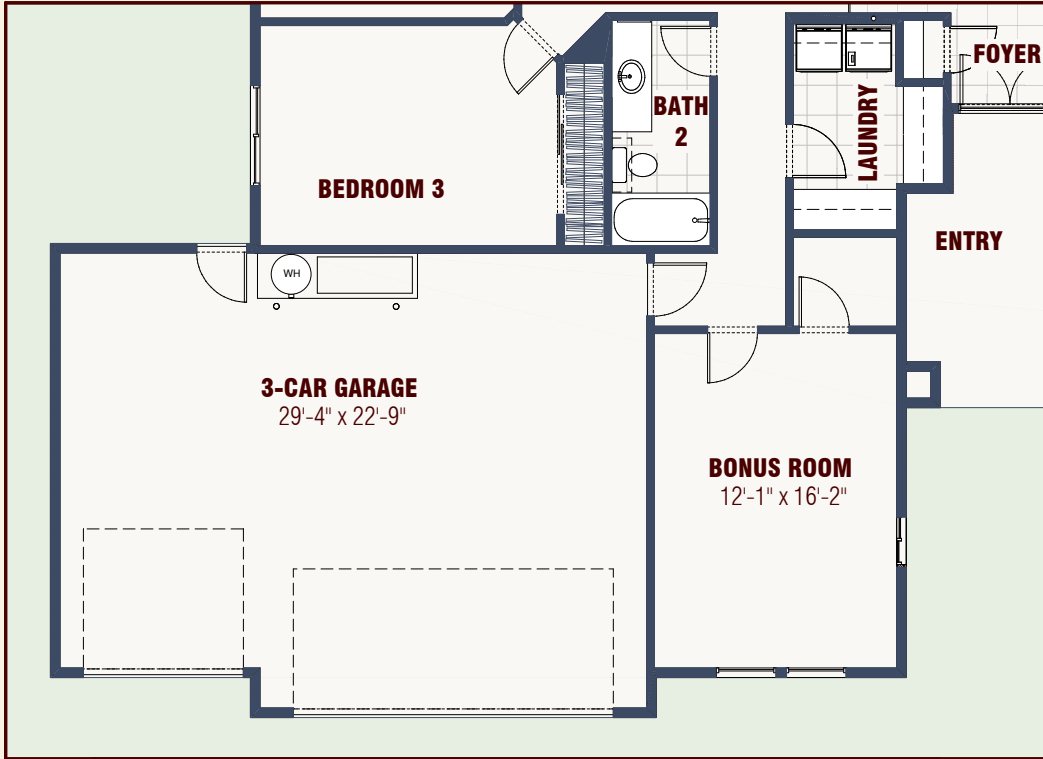
**Floor Plan - 2403 sq. ft.**

The builder reserves the right to make modifications to all plans and specifications without notice. All plans and illustrations are artist's conception. Square footages quoted are approximate. Colston Construction expressly reserves its common law copyright in these plans.

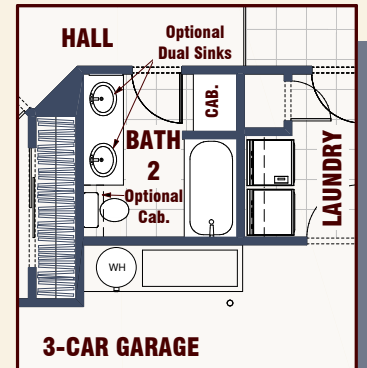


**COLSTON CONSTRUCTION, INC.**  
BUILDER OF QUALITY HOMES  
804 Vista Via Avenue  
Taft, Ca. 93268  
BOB COLSTON (661)763-3517

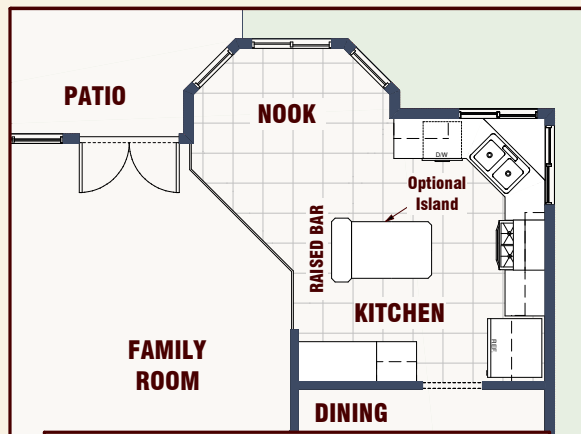
# The Kingston Options



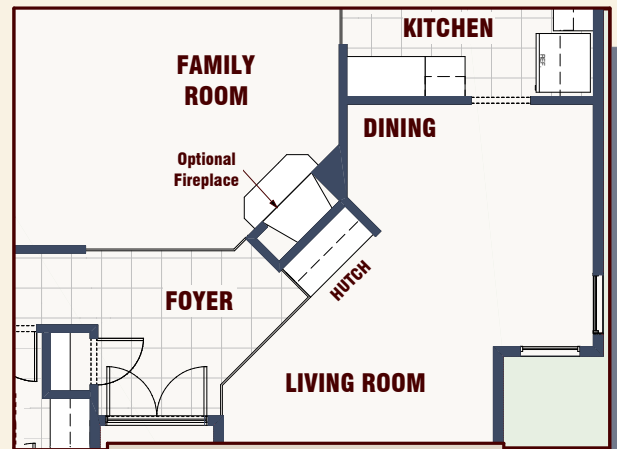
**Optional 3-Car Garage with Bonus Room**



**Optional Dual Sinks  
Optional Cabinet**



**Optional Kitchen Island**



**Optional Fireplace**