



# COLSTON CONSTRUCTION, INC.

BUILDER OF QUALITY HOMES

804 Vista Via Avenue

Taft, Ca. 93268

BOB COLSTON (661)763-3517

# The Darnell

- One Story
- 4 Bedroom
- 2 Bath
- Stainless Steel Fixtures and Appliances Throughout
- Optional Bonus Room
- Optional 3-Car Garage
- Optional 2-1/2 Car Garage
- Optional Extended 2-Car Garage
- Optional Dual Sinks in Hall Bath 2
- Optional Bath 2 Cabinet
- Optional Fireplace



**Floor Plan - 1885**

The builder reserves the right to make modifications to all plans and specifications without notice. All plans and illustrations are artist's conception. Square footages quoted are approximate. Colston Construction expressly reserves its common law copyright in these plans.



# COLSTON CONSTRUCTION, INC.

BUILDER OF QUALITY HOMES

804 Vista Via Avenue

Taft, Ca. 93268

BOB COLSTON (661)763-3517

# The Darnell



**1885 "A" MEDITERRANEAN**



**1885 "B" CRAFTSMAN**



**1885 "C" SPANISH**

The builder reserves the right to make modifications to all plans and specifications without notice. All plans and illustrations are artist's conception. Square footages quoted are approximate. Colston Construction expressly reserves its common law copyright in these plans.



**COLSTON CONSTRUCTION, INC.**  
BUILDER OF QUALITY HOMES  
804 Vista Via Avenue  
Taft, Ca. 93268  
BOB COLSTON (661)763-3517

# The Darnell with Bonus Room



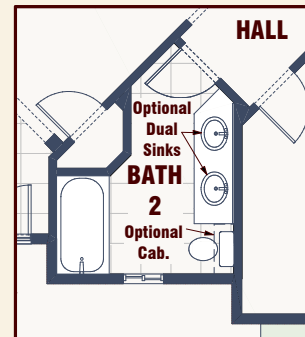
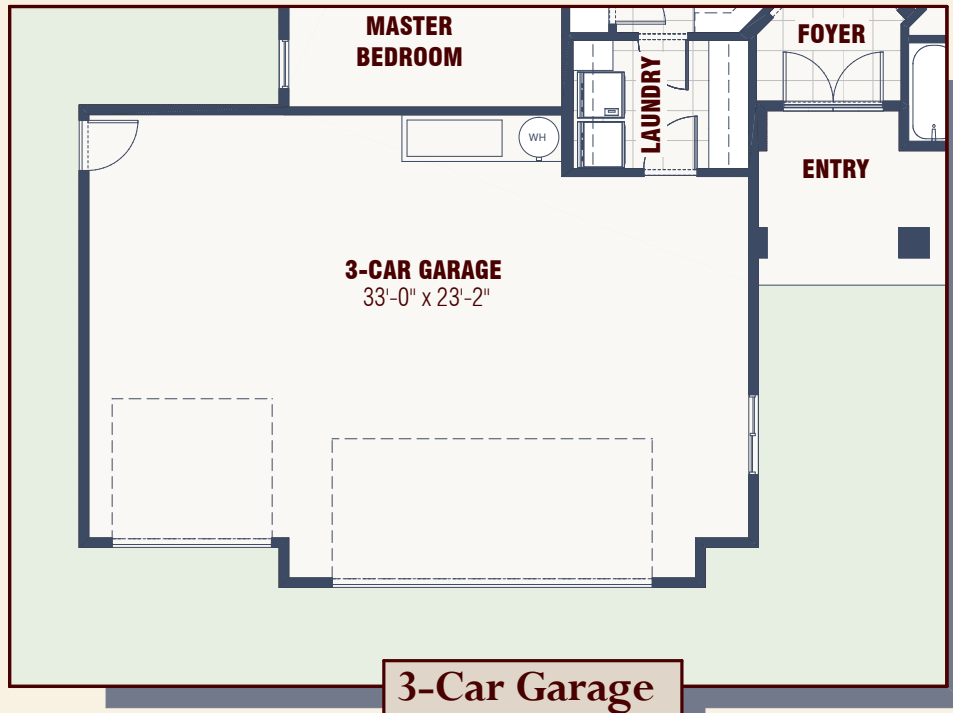
**Floor Plan - 2130 sq. ft.**

The builder reserves the right to make modifications to all plans and specifications without notice. All plans and illustrations are artist's conception. Square footages quoted are approximate. Colston Construction expressly reserves its common law copyright in these plans.

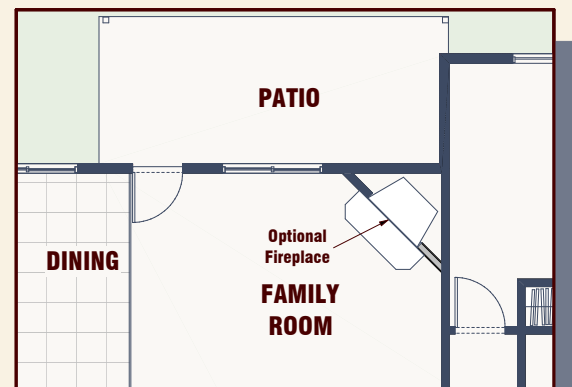
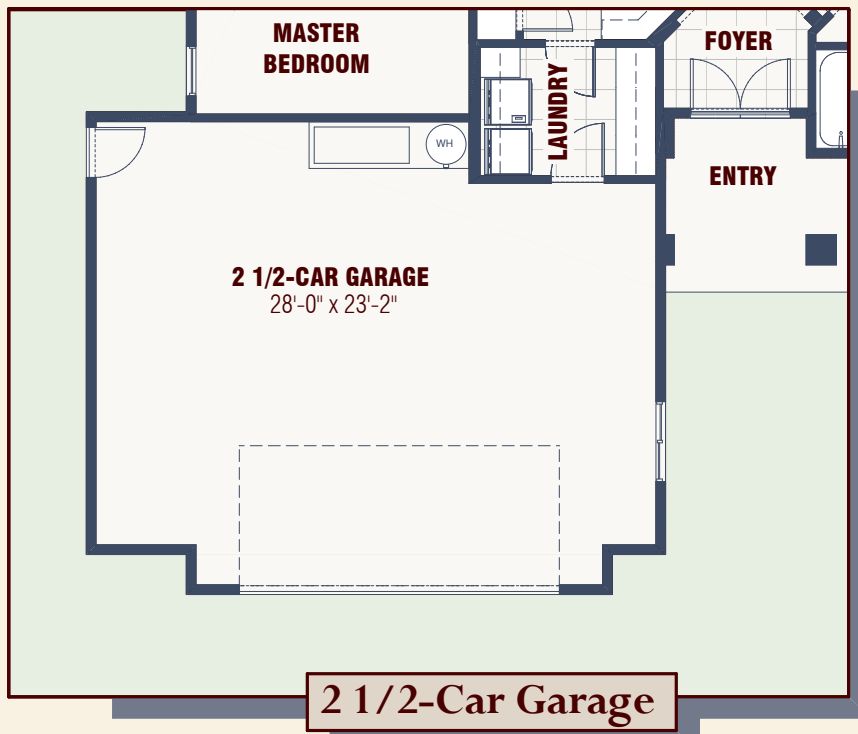


**COLSTON CONSTRUCTION, INC.**  
BUILDER OF QUALITY HOMES  
804 Vista Via Avenue  
Taft, Ca. 93268  
BOB COLSTON (661)763-3517

# The Darnell Options



**Optional Dual Sinks  
Optional Cabinet**



**Optional Fireplace**

Fireplace option  
requires removing one  
family room window